

# ARTCHEVAL

Saumur, Val de Loire, France  
Contemporary art inspired by horses

## Applications are now open

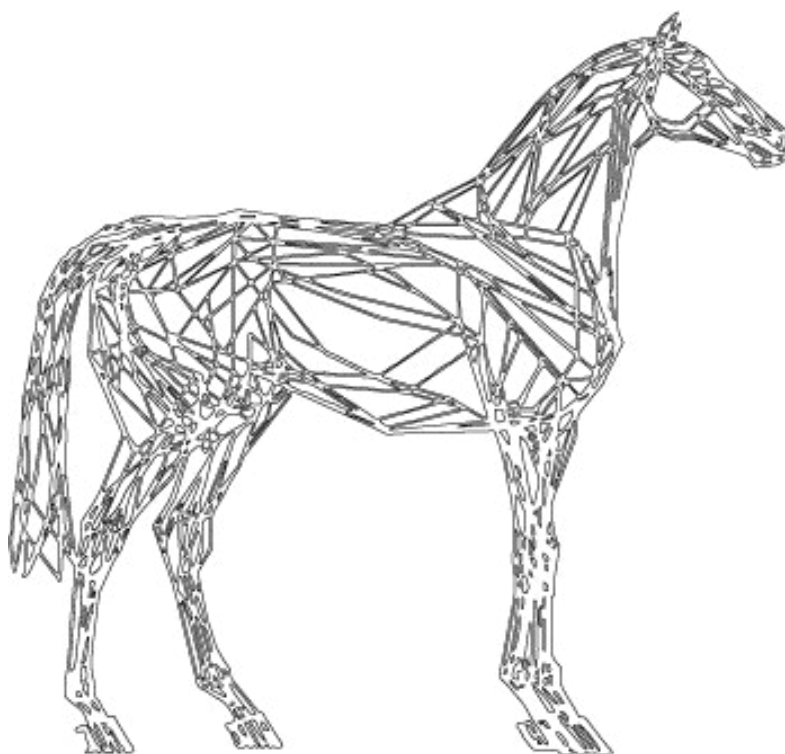
Residence: February to October 2024 / Exhibition: October 2024 to January 2025

Deadline for applications: 18th January 2024 at midnight

Contact: [comite@saumur.org](mailto:comite@saumur.org) - Le Comité Équestre de Saumur

### Summary :

1. ARTCHEVAL and ARTCHEVAL des écoliers
2. The Concept
3. The residency conditions
4. How to apply ?
5. The ARTCHEVAL selection committee
6. The Contemporary Art Center of Bouvet Ladubay
7. The royal Abbey of Fontevraud
8. The Theatre 'le Dôme' of Saumur



Fontevraud

  
BOUVET LADUBAY  
BRUT DE LOIRE

# 1. ARTCHEVAL AND ARTCHEVAL DES ÉCOLIERS

ARTCHEVAL celebrated its 31<sup>st</sup> anniversary in October 2023, and its 4<sup>th</sup> in the form of residency. This artistic project was first created in 1993 by Jean-Paul Hugot, the mayor of Saumur at the time, but organized by the *Comité Équestre de Saumur*.

This annual exhibition of Contemporary Art themed around the equestrian environment has the objectives to :

- Strengthen the position of Saumur as the world capital of equestrian arts, following the UNESCO's Lists of Intangible Heritage since 2011.
- Provide artists with creative space centered on the theme of horses.
- Offer artists an annual point of reference, a place of exchange, a collaborative goal of creation, an exhibition and promotion of their art.
- Present the public with the opportunity to explore contemporary art.
- Extend the discovery of contemporary art to students through framed creative workspaces.

## 2. THE CONCEPT

At the initiative of its organizer, the Equestrian Committee of Saumur, ARTCHEVAL took on a new form in 2020 by offering an artistic residency. The objective was to enable artists to immerse themselves in the culture of horse riding practiced in Saumur and its surroundings, notably through the observation of horses, the men, women, and children who live and breathe this work and passion.

A diptych exhibition in Saumur in autumn 2024, from mid-October to early January 2025, at the Bouvet Ladubay Contemporary Art Center and the Le Dôme Theatre will conclude the project, showcasing the works created during the residency.

The residency locations: in early 2024, Bouvet Ladubay in Saumur and the Royal Abbey of Fontevraud will host the three selected artists for several weeks. They will settle in to create pieces that present their unique perspective on horses and the Saumur region.

They are invited to produce original, previously unseen works specifically for these two exhibition venues. The artworks will be designed to be displayed within the Bouvet Ladubay Art Center and in the Loire Gallery of Le Dôme Theatre. In this second exhibition venue, the selected works will interact with the creative work of children envisioned by the artists prior to the project.

On-site, the team from the Equestrian Committee of Saumur and its partners will support the resident artists in various aspects of their research by connecting them with resource structures and individuals who can contribute to the development of their projects. The exhibition's curation will be overseen by Mr. Emmanuel Morin, the artistic and cultural director of the Royal Abbey of Fontevraud.

From this immersion, a collective exhibition will emerge at the Bouvet Ladubay Contemporary Art Center and the Loire Gallery of Le Dôme Theatre, where the horse will serve as the common thread among the different artists, each offering their perspective on a region steeped in equestrian tradition.

### 3. THE RESIDENCY CONDITIONS

The project unfolds across 7 phases, between February 2024 and January 2025:

**Phase 1 - February 2024 - *Discovery and Immersion*** : 2 to 3 on-site days for the 3 artists, familiarization with the exhibition venue, immersion, meetings with partners, and the local community.

**Phase 2 - Between 11<sup>th</sup> March and 7<sup>th</sup> April - *Defining Artistic Direction*** : Two weeks to define the artistic direction of the ARTCHEVAL project and ARTCHEVAL for schoolchildren. Mandatory presence in the territory on the 4<sup>th</sup> or 5<sup>th</sup> April for the presentation of the project to the Artistic Director and project teams.

**Phase 3 - 15<sup>th</sup> April to 31<sup>st</sup> July - *In Residence*** : Immersive production within the territory. Working on the ARTCHEVAL project for schoolchildren. A duration of 3 to 5 weeks maximum, totaling 25 days of work (in a maximum of 3 sessions), following a schedule defined by the Equestrian Committee, the artists, and the residency locations. Accommodation options include the Bouvet Ladubay Contemporary Art Center from the 15<sup>th</sup> april to 15<sup>th</sup> June or/and the Royal Abbey of Fontevraud from the 15<sup>th</sup> June to 31<sup>st</sup> July. Mandatory presence in the territory from 1<sup>st</sup> to 15<sup>th</sup> July. The artists will be accommodated either at the Art Center or at the Royal Abbey of Fontevraud depending on the chosen dates.

**Phase 4 - End of July - *Residency Output*** : Visuals and communication texts for promotion and mediation.

**Phase 5 - September - *School Workshops*** : Meetings and workshops in classrooms with students for the ARTCHEVAL project for schoolchildren.

**Phase 6 - October 2024 to January 2025 - *Exhibition*** : From the 14<sup>th</sup> to 17<sup>th</sup> October : Installation of artworks at the Bouvet Ladubay Contemporary Art Center during the week of the vernissage. The vernissage will take place on Friday 18<sup>th</sup> October 2024 (subject to change). Installation of artworks at the Théâtre le Dôme in Saumur.

**Phase 7 - 15<sup>th</sup> to 19<sup>th</sup> January 2025 - *Dismantling*** : Removal of artworks from the Bouvet Ladubay Contemporary Art Center (subject to change).



Exhibition - Florence Vasseur  
ARTCHEVAL 2023



Bouvet Ladubay Contemporary Art Center Entrance

Number of selected artists : 3 artists each year.

Payment and material :

The selected artists will receive a grant of 8 500 euros (6 500 euros for the ARTCHEVAL residency and 2 000 euros for the ARTCHEVAL des écoliers project).

These amounts are distributed as follows :

- **Travel expenses** to and from the venue will be reimbursed upon presentation of invoices for a maximum of three return trips within a 1 000 euros budget.
- The **specific material for creations** will be reimbursed upon presentation of invoices within a maximum of 2 500 euros production budget.

Compensation :

Each artist will receive a grant of 3 000 euros, encompassing fees as well as personal needs. An additional grant of 2 000 euros (inclusive of travel and production expenses) will be provided by the Saumur Val de Loire Agglomeration (separate agreement) as part of the ARTCHEVAL des écoliers project, in partnership with the Théâtre le Dôme de Saumur.

Conditions of reception and accommodation :

The Contemporary Art Center of Bouvet Ladubay or the royal Abbey of Fontevraud will host the artists during the time of residency. The artists are autonomous in their production and are invited to bring their own tools. Artists are also required to be independent for their travels.

Conditions of applications :

This project is open to all French and international artists who speak French or English fluently. There is no age limit to apply for this project. A valid driving license is required as well as a vehicle in order for the artists to travel between the infrastructures they visit in Saumur. Overall, 80% of the residency time will be dedicated to the artist's creative space and 20% of the time for the project with the schoolchildren with whom the artists will collaborate to present an exhibition.

Selection criteria :

1. Artistic qualities of the project.
2. Relevance of the project in the specific context of Saumur and the different aspects of its territory.
3. Perspectives of the integration with the Contemporary Art Center of Bouvet Ladubay and the Gallery Loire of the Dôme Theatre.
4. Proposition of the schoolchildren project which includes conducting workshops in class for the exhibition will be exhibited in the Dôme Theatre of Saumur.
5. Project feasibility.

Legal Framework :

A residency agreement specifying the commitments of the Equestrian Committee of Saumur, and those where the artists will be hosted, will be signed at the beginning of the residency. Artists are required to have a social security number and/or a company (Siret number) or be represented by an administrative structure allowing them to issue an invoice.



## Exhibition conditions :

During the exhibition, the Equestrian Committee of Saumur will receive a 10% commission on the sale of artworks made during the exhibition.

## **4. HOW TO APPLY ?**

### The application must include :

- A cover letter (maximum 1 page)
- A biography / curriculum vitae (maximum 1 page)
- A concise presentation of the artistic approach and a selection of previous works and professional artistic experiences in the form of a portfolio with visuals and texts (maximum 3 pages)
- A portfolio with a minimum of 10 pages (featuring staged scenes)
- A statement of intent (maximum 1 page)
- A creation budget
- Administrative and financial contact details

Please include in your application dossier images (minimum 10 photos with staging).

Deadline for project submission : 18<sup>th</sup> January 2024, at midnight.

The application dossier must be sent by email, exclusively in PDF format (.pdf), to: [comite@saumur.org](mailto:comite@saumur.org). Applications that do not comply with this condition will be automatically rejected.

Following a selection committee meeting, a decision will be made no later than 31<sup>st</sup> January 2024.

### For more information :

You can contact us via email at [comite@saumur.org](mailto:comite@saumur.org)

Or on our website: [www.saumur.org](http://www.saumur.org) / social media accounts, Instagram: [@comite.equestre.saumur](https://www.instagram.com/comite.equestre.saumur) and Facebook: [@Le Comité Equestre de Saumur](https://www.facebook.com/LeComiteEquestreSaumur).



*Sidonie Bilger*  
*Exhibition « Hippoteratos »*  
*Residency ARTCHEVAL 2023*



*Sylvain Wavrant*  
*Exhibition « Hippoteratos »*  
*Residency ARTCHEVAL 2023*



*Florence Vasseur*  
*Exhibition « Hippoteratos »*  
*Residency ARTCHEVAL 2023*

## 5. THE SELECTION COMMITTEE OF ARTCHEVAL

The artists in residency are selected by a committee of recognized professionals, most of whom are the originators of the ARTCHEVAL project created in 1993.

The selection committee is comprised of:

- Mr. Christian Renonciat (*artist*)
- Mr. Jean-Louis Sauvat (*artist*)
- Mr. Joël Person (*artist*)
- Ms. Juliette Monmousseau (*General Director of Bouvet Ladubay*)
- Mr. Xavier Libbrecht (*collector*)
- Mr. Jean-Louis Gouraud (*writer-publisher*)
- Mr. Emmanuel Morin (*Artistic and Cultural Director at the royal Abbey of Fontevraud*)
- Ms. Héloïse Gaillard (*Artistic Director of Théâtre le Dôme de Saumur*)

The producer (Equestrian Committee of Saumur) does not participate in the selection process.

The jury is sovereign; no appeals are admissible against the decisions it has made in accordance with the regulatory provisions. You will receive an email response following the selection.

## 6. THE CONTEMPORARY ART OF BOUVET LADUBAY

The aim of the Contemporary Art Center is to revive, right in the heart of the Val de Loire, the pleasure and spirit of the Renaissance. The Contemporary Art Center, comprising 9 exhibition rooms and a hall-bookstore, spans nearly 800m<sup>2</sup>.

This venue was inaugurated in 1992, under the patronage of Gonzague Saint-Bris and the artistic direction of Benoît Lemercier. *'With modesty but vigor, we have contributed to better acquaint the region's inhabitants and passing tourists with contemporary creation. By offering a wide-ranging program, we enable visitors to directly engage with artworks, to either embrace or reject them, thereby refining their own taste and reflection,'* explains Benoît Lemercier.

Discover the Bouvet Ladubay Art Center's website here: <https://centredart-bouvet-ladubay.fr/en/art-center/>

Bouvet Ladubay's website : <https://www.bouvetladubay.com/en/home/>

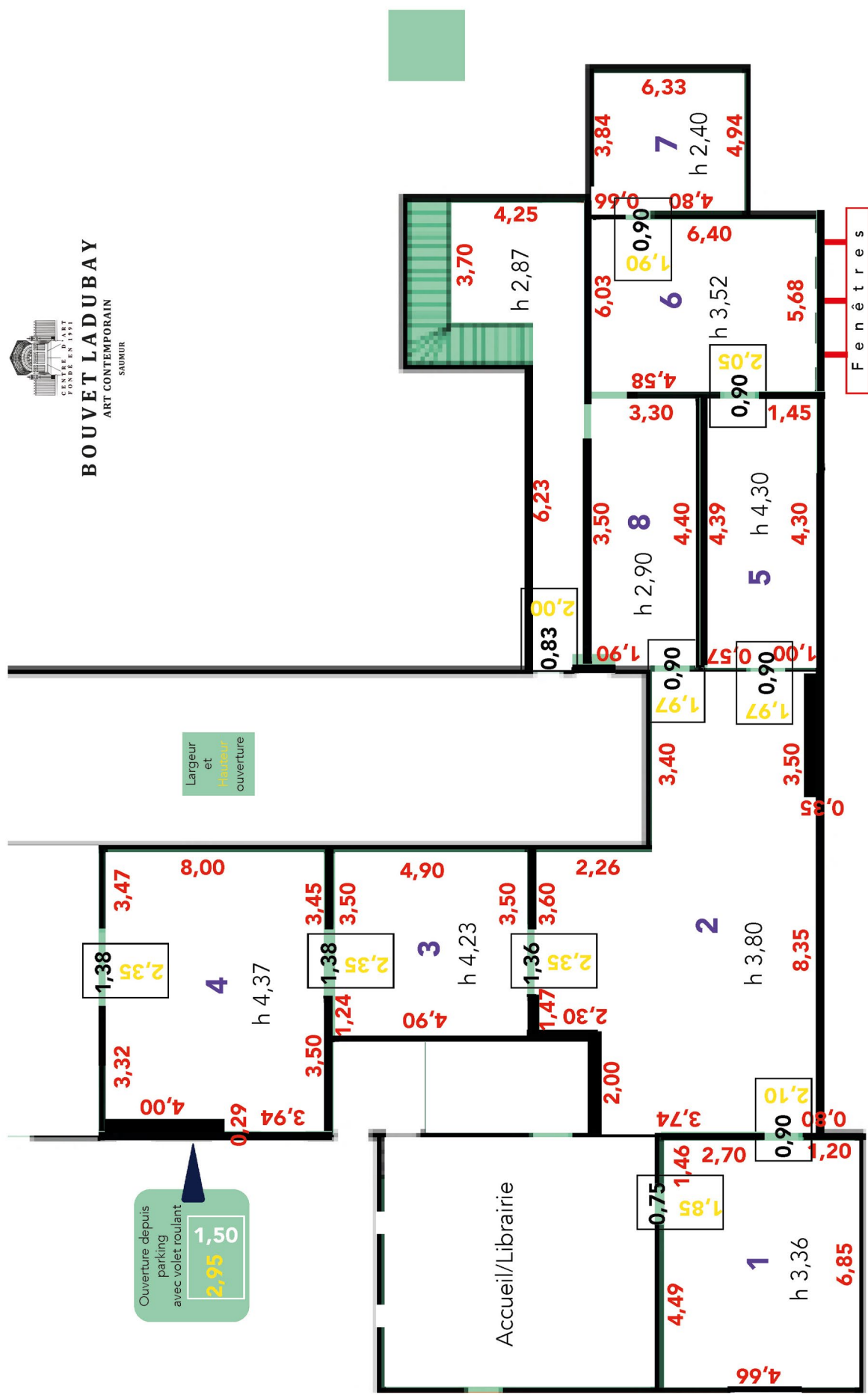


Entrance / Courtyard of the Bouvet  
Ladubay Contemporary Art Center  
– 19th-century Glass Roof



View of the Thouet River from the Bouvet  
Ladubay Contemporary Art Center

General layout of the Bouvet Ladubay Contemporary Art Center :





## 7. THE ROYAL ABBEY OF FONTEVRAUD

The teams of the Royal Abbey of Fontevraud have been collaborating on the ARTCHEVAL project for several years, working on the selection of artists and artistic direction.

Founded in 1101 on the borders of Anjou, Touraine, and Poitou, the Abbey continues to captivate with its history and its multifaceted cultural programming. Its expertise in scenography and production has enabled ARTCHEVAL to gain recognition in the world of contemporary art.

The artists will be guided by Emmanuel Morin, Artistic Director of the Royal Abbey of Fontevraud and the ARTCHEVAL project, in the development of their artistic project.

Website of the Royal Abbey of Fontevraud: [www.fontevraud.fr](http://www.fontevraud.fr)



*Royal Abbey of Fontevraud -  
© Royal Abbey of Fontevraud*



*In the Abbey's workspaces, Sylvain Wavrant - © CES*



*In the Abbey's workspaces, Sidonie Bilger - © CES*



## 8. THE DÔME THEATRE OF SAUMUR



The Dôme, located in Saumur (49) on the banks of the Loire, is a Theatre - Cultural and Artistic Center managed by the Saumur Val de Loire Agglomération Community. It has been under the direction of Héloïse Gaillard since September 2021.

The building houses an Italian-style auditorium with 423 seats, the Saumur Val de Loire Music School, two exhibition galleries, a foyer, a conference and rehearsal room, an audition room, dressing rooms, administrative offices, and a panoramic terrace.



*The Dôme Theatre of Saumur - © The Dôme Theatre*



*Molière Gallery during the exhibition ARTCHEVAL des écoliers - © CES*



*Molière Gallery during the exhibition ARTCHEVAL des écoliers - © CES*

### General layout of the Dôme Theatre of Saumur :

